



MAY 1999

1303.8

BUSINESS INDICATORS

**AUSTRALIAN
CAPITAL
TERRITORY**

EMBARGO: 11:30AM (CANBERRA TIME) TUES 25 MAY 1999

C O N T E N T S

	<i>page</i>
Notes	2
Summary of findings	3
Selected business indicators	6

FEATURE ARTICLE

Transition from Education to Work of Persons Aged 15–64 in the ACT. . . 7

TABLES

1 Business expectations: Sales, June quarter 1999/ March quarter 2000, expected aggregate change.	9
2 Business indicators, May 1999.	10
3 ACT in relation to the rest of Australia	13
4 ACT in relation to the rest of Australia—percentage changes.	14

- For more information about these and related unpublished statistics, contact Will Blythe on Canberra 02 6205 0032 or Marianita Jose on Canberra 02 6207 0277, or any ABS office shown on the back cover of this publication.

NOTES

FORTHCOMING ISSUES

<i>ISSUE</i>	<i>RELEASE DATE</i>
June 1999	23 June 1999
July 1999	20 July 1999
August 1999	23 August 1999
September 1999	20 September 1999
October 1999	18 October 1999
Nov 1999	23 November 1999

SYMBOLS AND OTHER USAGES

ACT	Australian Capital Territory
n.a.	not available
no.	number
n.p.	not available for publication
p	preliminary
*	Represents data with a standard error of greater than 25%. Caution should be exercised when using this data.
—	nil or rounded to zero

Dalma Jacobs
Regional Director, Australian Capital Territory

SUMMARY OF FINDINGS

UPDATED SERIES

Series updated since the April 1999 issue are: labour force, industrial disputes, wage and salary earners, retail trade, housing finance, building approvals, building commencements, engineering construction, motor vehicle registrations, consumer price index, private new capital expenditure, and state final demand. The feature article on pages 7–8 is on Transition from Education to Work in the ACT.

NOTABLE MOVEMENTS

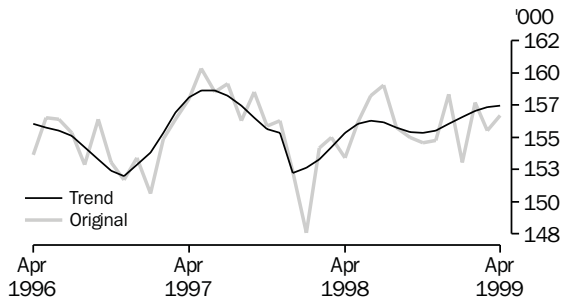
Labour force	In April 1999, the trend unemployment rate for the ACT was 6.0%, a 0.1% increase from the previous month, and a 1.0% decrease compared to April 1998. Trend employment increased by 0.1% (to 157,300 persons) and the trend participation rate remained stable at 70.8% compared to the previous month. Nationally, trend employment increased by 0.1% from the previous month and the trend unemployment rate remained steady at 7.4%.
Industrial disputes	For the 12 months ended January 1999 there were 35 working days lost per thousand employees in the ACT compared to 72 days nationally. In comparison with the 12 months ended January 1998, there was an increase of 133.3% for the ACT and a decrease of 1.4% nationally in the number of working days lost per thousand employees.
Wage and salary earners	The trend number of wage and salary earners reported by Government agencies and businesses located in the ACT increased by 0.7% (or 1,000 persons) to 140,800 in the period August 1998 to November 1998. This compares to a national increase of 1.0% (or 70,500 persons). The proportion of private sector wage and salary earners in the ACT was 52.4% in November 1998. These figures exclude self-employed persons in jobs located in the private sector.
Retail turnover	The trend estimate for retail turnover in the ACT for March 1999 was \$233.4 million, an increase of 1.3% from the revised figure of the previous month and was up 7.9% compared to 12 months ago. The national trend retail turnover recorded an increase of 1.1% from the previous month and was up 8.3% compared to a year ago.
Housing finance	The trend number of dwelling units financed (including refinancing) in the ACT in March 1999 was 825, an increase of 1.9% from the previous month. The trend estimate for the value of commitments in the ACT was \$106 million, an increase of \$4 million from the previous month. Refinancing of existing dwellings comprised 12.0% of the total value of dwelling units financed in March 1999, a decrease from 17.0% in the previous month. Nationally, the trend number of dwelling units financed (including refinancing) during March 1999 was 41,691, an increase of 1.8% from the previous month, while the trend estimate for the value of commitments increased to \$5,398 million (up 2.3%) from the previous month.

Building approvals	<p>The trend number of dwelling units approved in the ACT decreased by 1.6% to 242 dwelling units in March 1999. Nationally, the trend number of dwelling units approved decreased by 0.5% to 12,747 dwelling units in March 1999.</p> <p>The value of non-residential building approvals in the ACT was \$28.7 million in March 1999, a decrease of \$57.3 million (down 66.6%) from the previous month. There has been an increase of \$21.1 million (up 277.6%) compared to March 1998. Nationally, the value of non-residential building approvals decreased by 11.2% from the previous month and was up 10.8% from March 1998.</p>
Building commencements	<p>The value of new houses commenced in the ACT in the December quarter 1998 was \$35.0 million, down 30.4% from the previous quarter and was up 17.1% from the corresponding quarter of the previous year. Nationally, the value of new houses commenced in the December quarter 1998 recorded a 5.5% decrease from the previous quarter and a 3.4% increase on the corresponding quarter of the previous year.</p>
Engineering construction	<p>The value of construction work done by the public sector in the ACT during the December quarter 1998 increased by 2.9% to \$21.3 million from the previous quarter and increased by 17.0% or \$3.1 million compared to the December quarter 1997. Nationally, the value of public sector work done increased 24.7% from the previous quarter and increased 18.2% compared to the December quarter 1997.</p> <p>The value of engineering construction work done by the private sector in the ACT during the December quarter 1998 increased by 39.8% to \$15.1 million from the previous quarter and decreased by 20.1% or \$3.8 million compared to the December quarter 1997. Nationally, the value of private sector engineering construction work done was down 0.9% from the previous quarter and was up 8.9% compared to the December quarter 1997.</p>
Motor vehicle registration	<p>The trend estimate for ACT new motor vehicle registrations in March 1999 was 1,182, down 1.0% from the previous month, and was down 18.3% compared to March 1998. Nationally, the trend for total new motor vehicle registrations in March 1999 recorded a 0.5% increase from the previous month, and was up 2.4% compared to March 1998.</p>
Consumer price index	<p>The ACT experienced a decrease of 0.2% in the All Groups CPI for the March quarter 1999. This was close to the national figure of a 0.1% decrease. The ACT annual CPI rate to March quarter 1999 recorded an increase of 0.7%, while the annual CPI for the weighted average of the eight capital cities recorded an increase of 1.2%.</p>

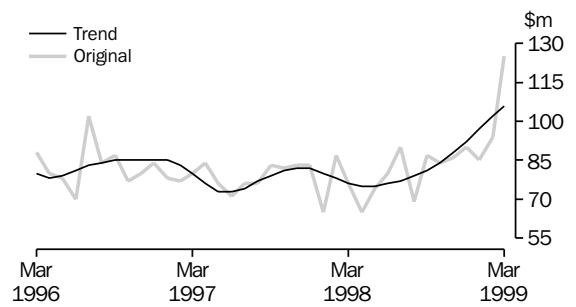
Private new capital expenditure	The trend private new capital expenditure in the ACT in the December quarter 1998 was \$110 million, an increase of 26.4% from the previous quarter and was up 111.5% compared to December 1997. Private new capital expenditure on buildings increased by 123.1% and equipment increased by 107.7% since December 1997. Nationally, the trend private new capital expenditure decreased by 2.3% from the previous quarter and was down 0.1% since December 1997.
State final demand	In the ACT, State Final Demand (chain volume measure) grew by 2.2% to \$17,010 million in 1997-98 compared to \$16,641 million in 1996-97. Gross State Product grew by 3.0% to \$11,196 million in 1997-98 compared to the previous financial period. Nationally, Domestic Final Demand (chain volume measure) grew by 5.3%, while Gross Domestic Product grew by 4.6% in 1997-98.

SELECTED BUSINESS INDICATORS

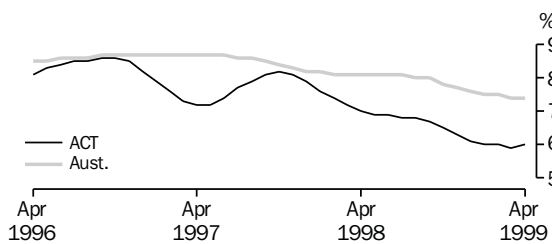
LABOUR FORCE, Employment



HOUSING FINANCE

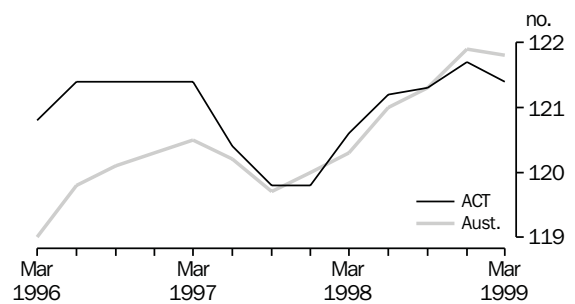


LABOUR FORCE, Unemployment rate: Trend

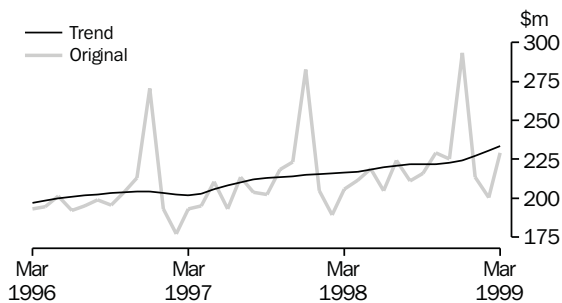


Note: Trend estimates for October 1998 to March 1999 have been revised.

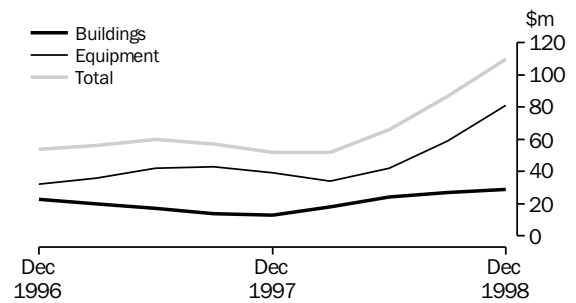
CONSUMER PRICE INDEX



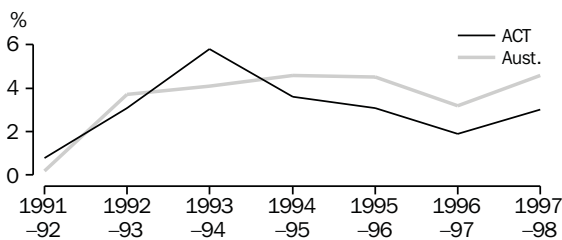
RETAIL TURNOVER



PRIVATE NEW CAPITAL EXPENDITURE: Trend

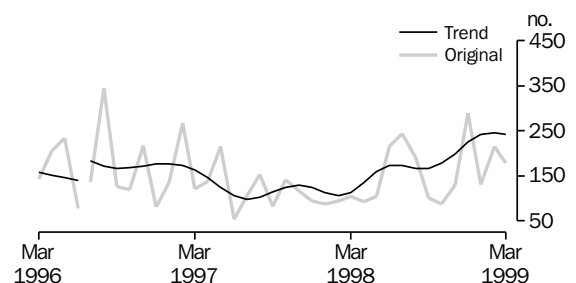


PERCENTAGE CHANGE FROM PREVIOUS YEAR IN GROSS STATE PRODUCT, Chain volume measures



Note: Reference year for chain volume measures is 1996-97.

BUILDING APPROVAL, Dwelling units approved



Note: For the period July to December 1996, 165 dwelling units and total building work of \$40.5 million (16%) had been incorrectly omitted from data reported to ABS. All series for the ACT have been revised from July 1996 and a trend break has been included in the graph.

TRANSITION FROM EDUCATION TO WORK OF PERSONS AGED 15–64 IN THE ACT

In the ACT the Transition from Education to Work survey conducted in May 1998 found that people with recognised post-school qualifications had a higher labour force participation rate and a substantially lower unemployment rate than people without recognised post-school qualifications. People with recognised post-school qualifications were more likely to have full-time jobs than those without recognised post-school qualifications. Of those persons without recognised post-school qualifications who were employed, 3 out of 10 were working part-time.

Educational attendance In May 1998 there were 52,044 students in the ACT aged 15–64 years—almost 25% of the population aged 15–64. This represents a decrease from the last survey in May 1997 when 30.3% of the population aged 15–64 attended an educational institution. Nationally, 17.4% of the population aged 15–64 years were attending an educational institution in May 1998, a decrease from 22.1% in May 1997.

Some 74.8% (38,937) of students were attending a tertiary institution, while 25.2% (13,107) were attending a school. Of those attending tertiary institutions, 22,299 were in higher education, while 11,592 were attending TAFE and 5,046 were attending other institutions.

In the ACT, there were approximately equal numbers of male and female school students, 6,682 and 6,425 respectively. However, there were more females (21,613 or 20.3% of all females aged 15–64 years) than males (17,324 or 16.5% of total males aged 15–64 years) attending tertiary institutions.

Some 47,644 persons were studying for a recognised educational qualification, 1,345 students were in courses not leading to a recognised qualification, and 3,055 were studying, but not for a qualification.

There were 15,218 persons aged 15–64 studying for a bachelor degree, 2,722 studying for a postgraduate diploma, and 3,619 studying for a higher degree. There were also 4,847 persons were studying for an undergraduate diploma, and 2,026 studying for an associate diploma. In vocational courses 3,627 persons were studying for a basic vocational course, while 2,210 were studying for a skilled vocational course.

In 1998 there were 3,659 persons who had gained a place in an educational institution in 1998 but had deferred their study to a later date, while 1,709 had been unable to gain a place.

Educational attainment In May 1998, 106,796 persons or 50.6% of the ACT population aged 15–64 years, had recognised post-school qualifications. This compares with the national figure of 41.9%. Of people with post-school qualifications in the ACT, 32.0% (34,136) had bachelor degrees, and 10.0% (10,713) had higher degrees. In terms of vocational qualifications, 16.7% (17,868) had basic vocational qualifications, and 16.2% (17,275) had skilled vocational qualifications.

Educational attainment Some 6.2% (13,006) of ACT population aged 15–64 years were still at school.
continued

About 43.3% (91,364 persons) of the ACT population aged 15–64 years had no post-school qualifications. This compares with the national figure of 52.7%. Of this total, 52,935 completed high school while 38,429 did not complete high school.

Labour force status Labour force participation rates for persons with recognised post-school qualifications remained higher (86.2%) than those without post-school qualifications (77.4%). These rates were above the national rates of 85.7% and 69.0% respectively. The unemployment rate for persons with recognised post-school qualifications (4.1%) was less than half the rate for those without post-school qualifications (9.0%).

In the ACT in May 1998, of the 106,796 persons aged 15–64 years with recognised post-school qualifications, 82.7% (88,362) were employed. Of this group of employed persons, 82.3% (72,682) were employed full-time and 17.7% (15,680) were employed part-time. Of all persons aged 15–64 years with recognised post-school qualifications, 13.8% (14,695) persons were not in the labour force.

There were 91,364 persons aged 15–64 years without recognised post-school qualifications, of which 70.4% (64,354) were employed. Of this group of employed persons, 70.1% (45,084) were employed full-time and 29.9% (19,270) were employed part-time. Of all persons aged 15–64 years without recognised post-school qualifications, 22.6% (20,670) were not in the labour force.

PERSONS AGED 15–64, EDUCATIONAL ATTAINMENT—MAY 1998

<i>Educational attainment</i>	<i>Males</i>	<i>Females</i>	<i>Persons</i>
With post-school qualification			
Higher degree	6 914	3 799	10 713
Postgraduate diploma	3 955	4 913	8 868
Bachelor degree	15 987	18 149	34 136
Undergraduate diploma	4 854	6 355	11 208
Associate diploma	3 946	2 782	6 727
Skilled vocational	15 063	2 213	17 275
Basic vocational	4 453	13 415	17 868
<i>Total</i>	<i>55 172</i>	<i>51 624</i>	<i>106 796</i>
Without post-school qualification			
Completed high school			
In tertiary education	8 983	9 565	18 548
Not in tertiary education	17 643	16 744	34 387
<i>Total</i>	<i>26 626</i>	<i>26 310</i>	<i>52 935</i>
Did not complete high school			
In tertiary education	1 471	1 737	3 208
Not in tertiary education	14 764	20 457	35 221
<i>Total</i>	<i>16 235</i>	<i>22 194</i>	<i>38 429</i>
<i>Total</i>	<i>42 860</i>	<i>48 504</i>	<i>91 364</i>
Still at school	6 682	6 324	13 006
Total	104 714	106 452	211 166

Source: Transition from Education to Work, Australia, May 1998 (Cat. no. 6227.0).

1

BUSINESS EXPECTATIONS: SALES

<i>Period</i>	<i>ACT</i>	<i>Aust.</i>
	%	%
Short-term		
Dec qtr 1997–Mar qtr 1998	-1.1	-0.3
Mar qtr 1998–Jun qtr 1998	-0.1	1.7
Jun qtr 1998–Sep qtr 1998	2.7	1.1
Sep qtr 1998–Dec qtr 1998	3.5	1.5
Dec qtr 1998–Mar qtr 1999	-2.7	-0.9
Mar qtr 1999–Jun qtr 1999	0.4	1.8
Medium-term		
Dec qtr 1997–Dec qtr 1998	2.9	3.0
Mar qtr 1998–Mar qtr 1999	2.6	2.6
Jun qtr 1998–Jun qtr 1999	6.9	2.7
Sep qtr 1998–Sep qtr 1999	7.5	2.8
Dec qtr 1998–Dec qtr 1999	2.6	2.7
Mar qtr 1999–Mar qtr 2000	1.7	2.3

Indicator	Unit	ACT			Aust.		
		Latest figure	Previous period	Same period previous year	% change from		Same period previous year
					Latest figure	Previous period	
POPULATION, VITAL AND LABOUR							
POPULATION, Sep qtr 98	'000	308.7	0.1	0.4	18 813.0	0.3	1.3
Natural increase	no.	735	-5.6	45.3	27 244	-14.4	4.6
Net migration	no.	-487	-65.6	51.4	34 766	98.3	14.5
Total increase	no.	248	-48.9	150.0	62 010	25.6	9.9
LABOUR FORCE, Apr 99							
Original Series							
Employed	'000	156.6	0.7	2.0	8 713.6	0.2	1.6
Unemployed	'000	9.8	-16.2	-12.5	705.2	-4.2	-3.8
Unemployment rate	%	5.9	-1.1	-0.9	7.5	-0.3	-0.4
Participation rate	%	70.4	-0.4	—	63.0	-0.2	-0.2
Long-term unemployed, Mar 99	no.	2 899	-9.6	-21.8	221 248	-9.2	-10.3
Long-term unemployed as percentage of total unemployed	—	24.9	-2.7	-2.3	30.0	-1.2	-0.8
Trend series							
Employed	'000	157.3	0.1	1.3	8 711.2	0.1	1.9
Unemployed	'000	10.0	1.0	-14.5	697.1	-0.2	-7.3
Unemployment rate	%	6.0	0.1	-1.0	7.4	—	-0.7
Participation rate	%	70.8	—	-0.6	63.0	—	-0.2
WAGE AND SALARY EARNERS, Dec qtr 98							
Trend series							
Public Sector	'000	67.0	-1.2	-4.3	1 442.3	-1.0	-1.8
Private Sector	'000	73.8	2.5	8.7	5 654.2	1.5	5.7
Total	'000	140.8	0.7	2.1	7 096.4	1.0	4.1
JOB VACANCIES, Feb 99							
JOB VACANCIES, Feb 99	'000	2.3	53.3	130.0	66.6	-14.0	-11.8
INDUSTRIAL DISPUTES IN PROGRESS, Jan 99							
Working days lost	'000	0.0	-100.0	—	8.3	-83.6	-3.5
Days lost per '000 employees (year ended Jan 99)	no.	35.0	-2.8	133.3	72.0	—	-1.4
HOUSING AND CONSTRUCTION							
HOUSING FINANCE, Mar 99							
Secured commitments to individuals for							
Original Series							
Construction of dwellings	\$m	12.0	71.4	71.4	999.0	33.2	34.8
Purchase of new dwellings	\$m	2.0	—	-33.3	264.0	23.9	3.9
Purchase of established dwellings	\$m	91.0	42.2	85.7	5 120.0	29.6	35.3
Re-financing	\$m	15.0	-6.3	15.4	985.0	24.2	24.2
Total housing commitments	\$m	125.0	33.0	64.5	6 383.0	29.9	33.6
Seasonally adjusted series							
Total housing commitments	\$m	111.0	14.4	54.2	5 600.0	10.7	27.2
Trend series							
Dwelling units financed	no.	825	1.9	24.1	41 691	1.8	3.5
Total housing commitments	\$m	106.0	3.9	39.5	5 398.0	2.3	17.9
BUILDING APPROVALS, Mar 99							
Original series							
Dwelling units	no.	178	-17.6	71.2	12 999	8.1	-6.2
Value of new residential	\$m	23.8	3.9	76.3	1 444.4	6.7	-0.5
Value of residential alterations and additions	\$m	3.6	16.1	-21.7	257.5	14.8	0.4
Value of non-residential	\$m	28.7	-66.6	277.6	1 063.7	-11.2	10.8
Value of total building	\$m	56.2	-49.9	118.7	2 765.6	-0.4	3.6
Trend series							
Dwelling units	no.	242	-1.6	114.2	12 747	-0.5	-6.0

Indicator	Unit	ACT			Aust.		
		% change from			% change from		
		Latest figure	Previous period	Same period previous year	Latest figure	Previous period	Same period previous year
BUILDING AND CONSTRUCTION <i>continued</i>							
BUILDING COMMENCEMENTS, Dec qtr 98							
New houses	no.	273	-35.6	5.0	25 211	-7.7	-1.2
Value of houses commenced	\$m	35.0	-30.4	17.1	3 015.8	-5.5	3.4
Value of non-residential building commenced	\$m	32.6	-39.3	-81.3	3 185.1	2.1	-21.4
Value of total commencements	\$m	99.9	-21.9	-58.9	8 054.4	-4.9	-7.8
PRICE INDEXES							
Established house price index, Dec qtr 98	—	127.8	0.9	1.3	129.0	1.7	6.4
ENGINEERING CONSTRUCTION (Dec qtr 98)							
Private sector							
Value of work commenced	\$m	17.7	86.3	17.2	2 882.1	23.0	4.8
Value of work done	\$m	15.1	39.8	-20.1	2 966.2	-0.9	8.9
Value of work yet to be done	\$m	15.3	10.9	121.7	5 903.6	-1.5	-9.5
Value of work done by public sector	\$m	21.3	2.9	17.0	1 683.8	24.7	18.2
PRICES, WAGES AND CONSUMER SPENDING							
CONSUMER PRICE INDEX, Mar qtr 99							
Food(a)	—	129.0	-0.1	3.0	127.5	1.2	4.4
Housing(a)	—	94.3	0.4	1.1	96.2	0.7	3.0
Transportation(a)	—	126.5	-0.3	-1.9	121.2	-0.6	-1.4
All groups(a)	—	121.4	-0.2	0.7	121.8	-0.1	1.2
AVERAGE WEEKLY EARNINGS, Nov 98							
Original series							
Males	\$	819.4	-2.4	3.8	722.8	0.1	1.9
Females	\$	612.7	-0.1	3.9	476.0	0.5	2.1
Persons	\$	720.5	-1.2	4.1	603.7	0.1	1.9
Trend series							
Males	\$	829.9	-0.3	4.5	723.9	0.4	2.6
Females	\$	616.4	0.8	4.3	478.3	1.0	2.7
Persons	\$	726.6	0.2	4.7	606.2	0.6	2.7
RETAIL TURNOVER, Mar 99							
Original series							
Food retailing	\$m	85.9	10.6	5.4	4 968.1	10.5	9.1
Department stores	\$m	21.3	25.3	7.6	915.3	22.3	11.2
Hospitality and services	\$m	37.9	15.2	14.2	2 147.7	10.0	16.7
All other retailing	\$m	84.1	15.5	17.8	3 904.9	12.2	9.8
Total	\$m	229.2	14.4	11.3	11 936.0	11.8	10.8
Trend series							
Food retailing	\$m	84.2	0.8	3.7	4 928.3	0.9	6.5
Department stores	\$m	25.4	—	5.8	1 076.6	0.3	7.6
Hospitality and services	\$m	37.7	0.3	9.3	2 150.4	1.7	14.9
All other retailing	\$m	86.1	2.6	12.4	4 081.3	1.1	7.5
Total	\$m	233.4	1.3	7.9	12 236.6	1.1	8.3

(a) Base year: 1989-90=100.0.

Indicator	Unit	ACT			Aust.		
		Latest figure	Previous period	Same period previous year	% change from		Same period previous year
					Latest figure	Previous period	
TOURISM AND TRANSPORT							
HOTELS, MOTELS AND GUEST HOUSE ACCOMMODATION, Dec qtr 98							
Original series							
Room nights	'000	242.9	n.a	-1.4	9 904.4	2.7	4.9
Takings at current prices	\$m	24.4	n.a	1.7	1 043.2	n.a	5.7
Guest arrivals	'000	195.0	n.a	n.a	7 973.9	n.a	n.a
Guest nights	'000	419.4	n.a	n.a	17 560.1	n.a	n.a
Room occupancy rate	%	58.9	n.a	-5.4	59.4	1.2	-0.7
NEW MOTOR VEHICLE REGISTRATIONS, Mar 99							
Motor vehicles	no.	1 302	19.8	-16.8	76 232	26.4	11.6
Seasonally adjusted motor vehicles	no.	1 170	-0.3	-22.6	69 444	8.6	7.9
Trend motor vehicles	no.	1 182	-1.0	-18.3	66 773	0.5	2.4
AGGREGATE INDICATORS							
STATE ACCOUNTS, 1997-98(a)							
Original series (chain volume measures)(b)(c)							
Household final consumption expenditure	\$m	6 074	5.9	—	327 236	4.6	—
General government final consumption expenditure	\$m	9 681	3.0	—	101 855	4.1	—
Private gross fixed capital formation	\$m	1 163	18.2	—	110 110	n.a	—
Public gross fixed capital formation	\$m	92	-82.6	—	20 820	n.a	—
State final demand	\$m	17 010	2.2	—	560 021	5.3	—
Gross state product	\$m	11 943	4.3	—	555 689	4.6	—
STATE ACCOUNTS, 1997-98(a)							
Original series (at current prices)							
Household final consumption expenditure	\$m	6 150	7.3	—	332 311	6.2	—
General government final consumption expenditure	\$m	9 762	3.9	—	103 581	5.9	—
Private gross fixed capital formation	\$m	1 421	44.4	—	111 015	12.4	—
Public gross fixed capital formation	\$m	9	-97.7	—	20 915	-5.6	—
State final demand	\$m	17 474	5.0	—	567 821	6.8	—
Gross state product	\$m	11 477	5.6	—	564 705	6.1	—
PRIVATE NEW CAPITAL EXPENDITURE, Dec qtr 98							
Original series (at current prices)							
Buildings and structures	\$m	29	38.1	123.1	4 132	10.2	10.8
Equipment, plant and machinery	\$m	84	78.7	147.1	7 867	-0.1	-13.3
Total	\$m	113	66.2	140.4	11 998	3.2	-6.3
Trend series (at current prices)							
Buildings and structures	\$m	29	7.4	123.1	3 887	2.2	23.6
Equipment, plant and machinery	\$m	81	37.3	107.7	7 605	-4.4	-9.1
Total	\$m	110	26.4	111.5	11 492	-2.3	-0.1

(a) Quarterly state final demand details are released as a special data service (Product no. 5206.0.40.001).

(b) Experimental series. Users are cautioned these estimates are derived indirectly by calculating a deflator from the expenditure components of the state series concerned. Therefore, in general, the sum of the state estimates does not equal the estimates for Australia.

(c) Reference year for chain volume measures is 1996-97.

Source: ABS publications: *Australia Demographic Statistics* (Cat. no. 3101.0), *Australian National Accounts: State Accounts* (Cat. no. 5242.0), *Housing Finance for Owner Occupation, Australia* (Cat. no. 5609.0), *Labour Force, Australia, Preliminary* (Cat. no. 6202.0), *Labour Force, Australia* (Cat. no. 6203.0), *Industrial Disputes, Australia* (Cat. no. 6321.0), *Job Vacancies and Overtime, Australia* (Cat. no. 6354.0), *Consumer Price Index* (Cat. no. 6401.0), *Price Index of Materials Used in House Building, Six Capital Cities* (Cat. no. 6408.0), *House Price Indexes: Eight Capital Cities* (Cat. no. 6416.0), *Retail Trade, Australia* (Cat. no. 8501.0), *Tourism Indicators, Australia* (Cat. no. 8634.0), *Tourism Accommodation, ACT* (Cat. no. 8635.8), *Building Approvals, Australia* (Cat. no. 8731.0), *Building Activity, Australia* (Cat. no. 8752.0), *New Motor Vehicle Registration, Australia* (Cat. no. 9301.0), *Private New Capital Expenditure* (Cat. no. 5646.0).

Indicator	Unit	Latest period	NSW	Vic.	Qld	SA	WA	Tas.	NT	ACT	Aust.
POPULATION	'000	Sep qtr 98	6 363.0	4 674.9	3 471.5	1 488.8	1 840.4	471.6	190.9	308.7	18 813.0
LABOUR FORCE (trend)											
Employed persons	'000	Apr 99	2 903.1	2 171.6	1 639.4	657.3	894.3	193.5	96.2	157.3	8 711.2
Unemployment rate	%	Apr 99	6.9	7.6	7.8	8.7	7.2	10.4	4.2	6.0	7.4
WAGE AND SALARY EARNERS (trend)											
Public sector	'000	Dec qtr 98	463.0	306.0	285.1	113.8	143.8	41.3	22.3	67.0	1 442.3
Private sector	'000	Dec qtr 98	1 994.3	1 464.7	983.7	410.3	565.7	113.6	47.9	73.8	5 654.2
Total public & private sector	'000	Dec qtr 98	2 457.4	1 770.7	1 268.9	524.2	709.6	155.0	70.2	140.8	7 096.4
STATE ACCOUNTS(a) (original)											
Gross state product (chain volume measures)(b)(c)	\$m	1997-98	196 815	143 236	90 019	38 573	60 464	10 914	5 930	11 196	556 923
Gross state product (current prices)	\$m	1997-98	200 160	143 686	91 732	38 966	61 582	11 104	5 998	11 477	564 705
PRIVATE NEW CAPITAL EXPENDITURE (trend)											
Total (at current prices)	\$m	Dec qtr 98	3 658	2 865	1 880	581	1 852	119	630	110	11 492
BUILDING APPROVALS											
Dwelling units approved (original)	no.	Mar 99	4 307	3 470	2 095	750	1 921	126	152	178	12 999
Dwelling units approved (trend)	no.	Mar 99	4 304	3 289	2 175	664	1 728	117	149	242	12 747
Value of non-residential building approved	\$m	Mar 99	394.5	275.0	191.0	56.1	86.6	16.5	17.5	28.7	1 063.7
Value of all buildings approved	\$m	Mar 99	994.8	761.3	436.6	139.8	308.1	31.6	37.3	56.2	2 765.6
ENGINEERING CONSTRUCTION											
Value of engineering construction work done	\$m	Dec qtr 98	1 424.2	844.9	1 134.7	245.9	814.6	55.2	94.0	36.4	4 650.0
AVERAGE WEEKLY EARNINGS (trend)											
Full-time adult ordinary time	\$	Nov 98	770.2	736.5	695.7	702.8	755.0	696.5	749.3	854.5	742.6
RETAIL TRADE (trend)											
Retail turnover	\$m	Mar 99	4 237.2	2 913.0	2 306.2	904.9	1 222.5	279.5	131.7	233.4	12 236.6
HOTELS, MOTELS & GUEST HOUSE ACCOMMODATION											
Room nights occupied	'000	Dec qtr 98	3 210.5	1 602.6	2 793.0	562.6	914.8	284.7	293.2	221.3	8 724.6
Room occupancy rate	%	Dec qtr 98	59.8	58.7	60.6	60.8	57.7	56.2	52.8	59.1	54.6
NEW MOTOR VEHICLE REGISTRATIONS (trend)	no.	Mar 99	22 595	17 361	12 797	4 189	6 655	1 255	739	1 182	66 773
	Unit	Latest period	Syd.	Melb.	Bris.	Adel.	Perth	Hob.	Dar.	Canb.	Aust.
CONSUMER PRICE INDEX											
Food(d)	—	Mar qtr 99	129.1	125.8	126.4	128.0	128.4	125.5	125.6	129.0	127.5
Housing(d)	—	Mar qtr 99	103.8	87.3	101.6	92.2	90.6	95.8	116.0	94.3	96.2
Transportation(d)	—	Mar qtr 99	122.5	119.9	120.5	120.9	121.1	118.4	119.1	126.5	121.2
All Groups(d)	—	Mar qtr 99	122.6	121.0	122.8	122.7	119.8	122.1	122.1	121.4	121.8
Average retail prices (cents)											
Milk, carton, supermarket sales	1 litre	Mar qtr 98	122	139	119	136	141	130	130	115	n.a.
Bread, white loaf, sliced, supermarket sales	680 g	Mar qtr 98	217	212	192	161	208	203	217	210	n.a.
Beef, rump steak	1 kg	Mar qtr 99	1 180	1 059	1 066	1 193	1 091	1 001	1 190	1 142	n.a.
Chicken, frozen	1 kg	Mar qtr 99	369	357	322	365	350	378	381	361	n.a.
Potatoes	1 kg	Mar qtr 99	129	149	124	82	138	89	149	146	n.a.
Coffee, instant (jar)	150 g	Mar qtr 99	627	634	584	556	643	588	589	535	n.a.
Scotch nip, public bar	30 ml	Mar qtr 99	329	318	269	358	389	264	330	273	n.a.
Private motoring petrol											
Leaded	1 litre	Mar qtr 99	68.7	66.8	60.2	68.3	68.9	74.1	75.7	72.0	n.a.
Unleaded	1 litre	Mar qtr 99	66.4	64.6	57.9	65.9	66.7	72.1	73.7	69.7	n.a.

(a) State estimates are not comparable to national estimates from the June quarter 1995 due to revised methodology used in *Australian National Accounts, State Accounts* (Cat. no. 5242.0).

(b) Experimental series. Users are cautioned these estimates are derived indirectly by calculating a deflator from the expenditure components of the state series concerned. Therefore, in general, the sum of the state estimates does not equal the estimates for Australia.

(c) Reference year for chain volume measures is 1996-97.

(d) Base year: 1989-90 = 100.0.

Indicator	Latest period	State									Aust.
		NSW	Vic.	Qld	SA	WA	Tas.	NT	ACT		
POPULATION	Sep qtr 98	0.3	0.3	0.4	0.1	0.5	-0.1	0.5	0.1	0.3	
LABOUR FORCE (trend)											
Employed persons	Apr 99	0.1	0.1	0.2	—	—	0.1	0.2	0.1	0.1	
Unemployment rate	Apr 99	—	0.1	—	-0.1	—	—	0.1	0.1	—	
WAGE AND SALARY EARNERS (trend)											
Pubic sector	Dec qtr 98	-1.3	-1.0	1.3	-4.4	-2.3	1.2	—	-1.2	-1.0	
Private sector	Dec qtr 98	2.5	1.4	0.2	2.1	0.1	1.0	1.1	2.5	1.5	
Total public and private sector	Dec qtr 98	1.8	1.0	0.5	0.7	-0.4	1.1	0.7	0.7	1.0	
STATE ACCOUNTS(a) (original)											
Gross state product (chain volume measures)(b)(c)	1997-98	4.1	5.1	4.2	5.9	6.3	2.7	5.2	3.0	4.6	
Gross state product (current prices)	1997-98	5.9	5.4	6.2	6.9	8.3	4.5	6.4	5.6	6.1	
PRIVATE NEW CAPITAL EXPENDITURE (trend)											
Total (at current prices)	Dec qtr 98	-0.7	0.6	5.4	-13.7	-12.9	-7.0	56.3	26.4	-2.3	
BUILDING APPROVALS											
Dwelling units approved (original)	Mar 99	12.0	-1.3	3.7	23.6	24.2	15.6	-9.5	-17.6	8.1	
Dwelling units approved (trend)	Mar 99	-0.5	0.2	-3.7	1.5	2.1	0.9	-9.1	-1.6	-0.5	
Value of non-residential building approved	Mar 99	-8.0	7.5	46.8	-52.6	-44.6	292.9	143.1	-66.6	-11.2	
Value of all buildings approved	Mar 99	0.4	4.1	23.9	-26.0	-10.4	79.5	-4.4	-49.9	-0.4	
ENGINEERING CONSTRUCTION											
Value of engineering construction work done	Dec qtr 98	14.6	3.1	15.2	0.6	-7.3	3.4	7.6	15.2	7.1	
AVERAGE WEEKLY EARNINGS (trend)											
Full-time adult ordinary time	Nov 98	1.4	0.8	—	1.3	1.2	0.4	0.4	0.1	1.0	
RETAIL TRADE (trend)											
Retail turnover	Mar 99	0.9	1.1	1.2	0.6	1.0	1.2	0.8	1.3	1.1	
HOTELS, MOTELS & GUEST HOUSE ACCOMMODATION											
Room nights occupied	Dec qtr 98	11.1	13.2	17.7	17.3	11.0	26.0	-0.6	-8.9	-3.7	
Room occupancy rate	Dec qtr 98	3.5	4.8	6.5	7.2	3.2	11.5	-1.4	-5.7	-3.4	
NEW MOTOR VEHICLE REGISTRATIONS (trend)	Mar 99	0.1	0.5	0.4	0.8	1.8	0.4	1.9	-1.0	0.5	
	Latest period	Syd.	Melb.	Bris.	Adel.	Perth	Hob.	Dar.	Canb.	Aust.	
CONSUMER PRICE INDEX											
Food(d)	Mar qtr 99	1.8	1.2	1.1	-0.2	0.6	0.4	120.6	-0.1	1.2	
Housing(d)	Mar qtr 99	1.2	0.8	0.3	0.3	0.2	0.4	1.3	0.4	0.7	
Transportation(d)	Mar qtr 99	-0.7	-0.6	-0.4	-0.3	-0.9	-0.2	-0.6	-0.3	-0.6	
All Groups(d)	Mar qtr 99	0.2	0.2	-0.2	-0.7	-0.3	-0.5	-0.5	-0.2	-0.1	
Average retail prices (cents)											
Milk, carton, supermarket sales	Mar qtr 99	5.2	3.0	-0.8	3.0	4.4	4.0	6.6	0.0	n.a.	
Bread, white loaf, sliced, supermarket sales	Mar qtr 99	3.3	5.5	-3.5	-3.6	6.1	-0.5	—	0.0	n.a.	
Beef, rump steak	Mar qtr 99	1.5	2.7	2.4	3.2	7.2	13.6	-3.2	-2.1	n.a.	
Chicken, frozen	Mar qtr 99	0.8	3.5	-4.7	9.9	0.3	-0.5	8.5	4.3	n.a.	
Potatoes	Mar qtr 99	1.6	8.8	-7.5	-4.7	2.2	15.6	21.1	-2.0	n.a.	
Coffee, instant (jar)	Mar qtr 99	9.4	3.9	-2.7	-1.2	-5.3	-12.4	-2.6	-13.0	n.a.	
Scotch nip, public bar	Mar qtr 99	-6.8	0.6	-0.4	-1.1	1.3	—	0.9	1.1	n.a.	
Private motoring petrol											
Leaded	Mar qtr 99	-3.4	-2.2	-2.6	-1.7	-2.7	-0.9	-1.9	-2.7	n.a.	
Unleaded	Mar qtr 99	-3.5	-2.3	-2.7	-1.9	-2.8	-1.0	-2.0	-2.8	n.a.	

(a) State estimates are not comparable to national estimates from the June quarter 1995 due to revised methodology used in *Australian National Accounts, State Accounts* (Cat. no. 5242.0).

(b) Experimental series. Users are cautioned these estimates are derived indirectly by calculating a deflator from the expenditure components of the state series concerned. Therefore, in general, the sum of the state estimates does not equal the estimates for Australia.

(c) Reference year for chain volume measures is 1996-97.

(d) Base year: 1989-90 = 100.0.

SELF-HELP ACCESS TO STATISTICS

DIAL-A-STATISTIC For current and historical Consumer Price Index data, call 1902 981 074.
For the latest figures for National Accounts, Balance of Payments, Labour Force, Average Weekly Earnings, Estimated Resident Population and the Consumer Price Index call 1900 986 400.
These calls cost 75c per minute.

INTERNET www.abs.gov.au

LIBRARY A range of ABS publications is available from public and tertiary libraries Australia wide. Contact your nearest library to determine whether it has the ABS statistics you require.

WHY NOT SUBSCRIBE?

PHONE +61 1300 366 323

FAX +61 3 9615 7848

CONSULTANCY SERVICES

ABS offers consultancy services on a user pays basis to help you access published and unpublished data. Data that are already published and can be provided within 5 minutes is free of charge. Statistical methodological services are also available. Please contact:

<i>City</i>	<i>By phone</i>	<i>By fax</i>
Canberra	02 6252 6627	02 6207 0282
Sydney	02 9268 4611	02 9268 4668
Melbourne	03 9615 7755	03 9615 7798
Brisbane	07 3222 6351	07 3222 6283
Perth	08 9360 5140	08 9360 5955
Adelaide	08 8237 7400	08 8237 7566
Hobart	03 6222 5800	03 6222 5995
Darwin	08 8943 2111	08 8981 1218

POST Client Services, ABS, PO Box 10, Belconnen ACT 2616

EMAIL client.services@abs.gov.au



2130380005994
ISSN 1320-808X

RRP \$15.50